



IP68 防水接线器/ waterproof connector

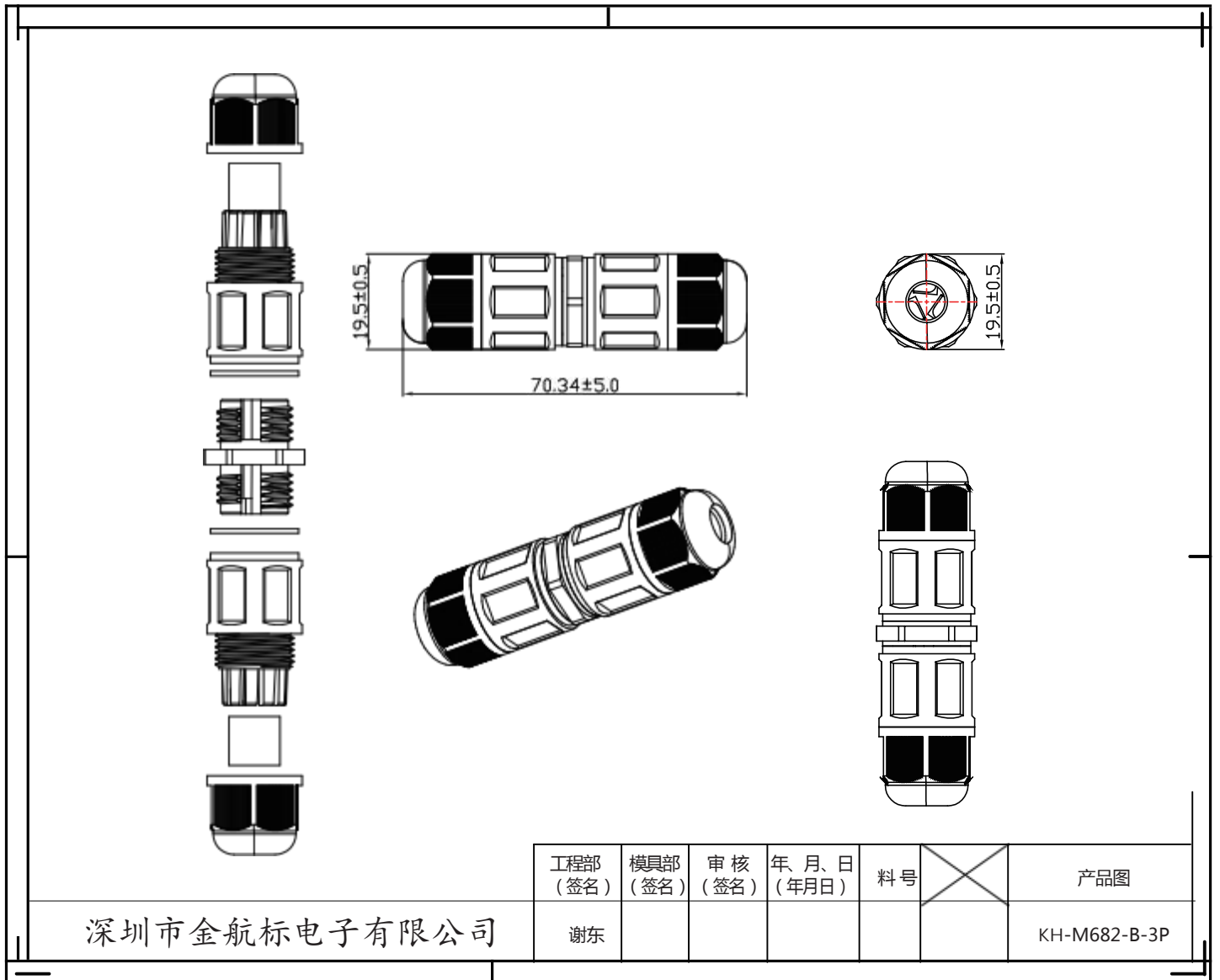
KH-M682-B-3P



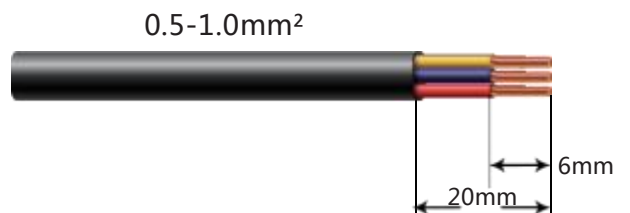
产品参数/Technical data

型号 Model	KH-M682-B-3P	
材料 Material	防火阻燃 Fire and flame retardant UL94V-2	
额定输出 Rated output	IEC/NSW:17.5A 450VAC ETL:10A 300VAC	
防护等级 IP code	IP68	
接线内芯 Terminal	2P/3P	
工作温度 Working	T105	
接线范围 Rated connecting capacity	欧规 European:0.5 ~ 1.5mm ² 澳规 Australia:0.5 ~ 1.5mm ² 美规 American: SJOW 18AWG	
密封胶塞/seal plug		
胶塞孔径/plug aperture	6.5mm	9mm
适用线径/Available cable diameter (橡胶圆线/Round rubber cable)	2*M16(3-6.5mm)	2*M16(5-9mm)
防水测试 Testing	20M 150hours	
参考剥线长度 Refer to stripping length	外剥线 External stripping 20mm 内剥线 Internal stripping 6mm	
产品尺寸 Product Size(参考实际尺寸图)	70.3*19.5mm (Refer to actual drawing)	
认证 Certification	ENEC,CE,UKCA,ETL,NSW,CB,ROHS	
产品应用/Application	水底/Underwater(淡水 fresh water) 地埋/Underground	
注/Mark:	<p>1.不能使用在盐碱土壤/Do not use in saline soil</p> <p>2.不能长期接触油性物质或浸泡在油污中/Do not contact oily substances or soak in oil for a longtime</p> <p>3.不建议长期在日照暴晒下使用/Longtime exposed under sunshine is not recommended</p>	

产品图纸/Product drawings



参考剥线长度
Refer to stripping length

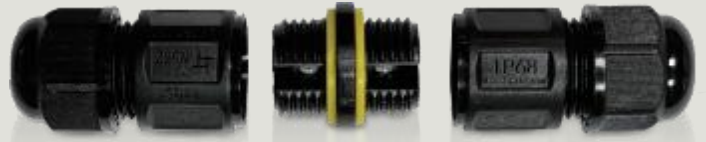


接线步骤/Wiring steps

01

扭开两端螺帽套筒，取出接线内芯

Open the nut cover at both end sides, take out quick connector



02

将线材穿过螺帽套筒

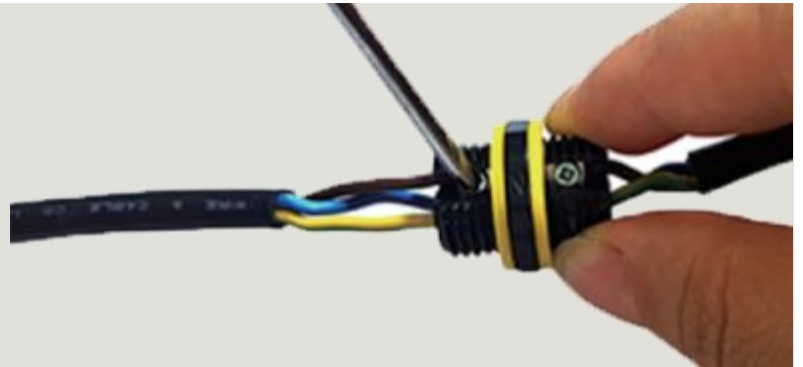
Thread the cable through the nut



03

线材插入接线内芯后螺丝固定

The wire is inserted into the inner core of the connection and fixed by a screw



04

拧紧两端螺帽主体，接线完成

Twist and tighten the cable glands

