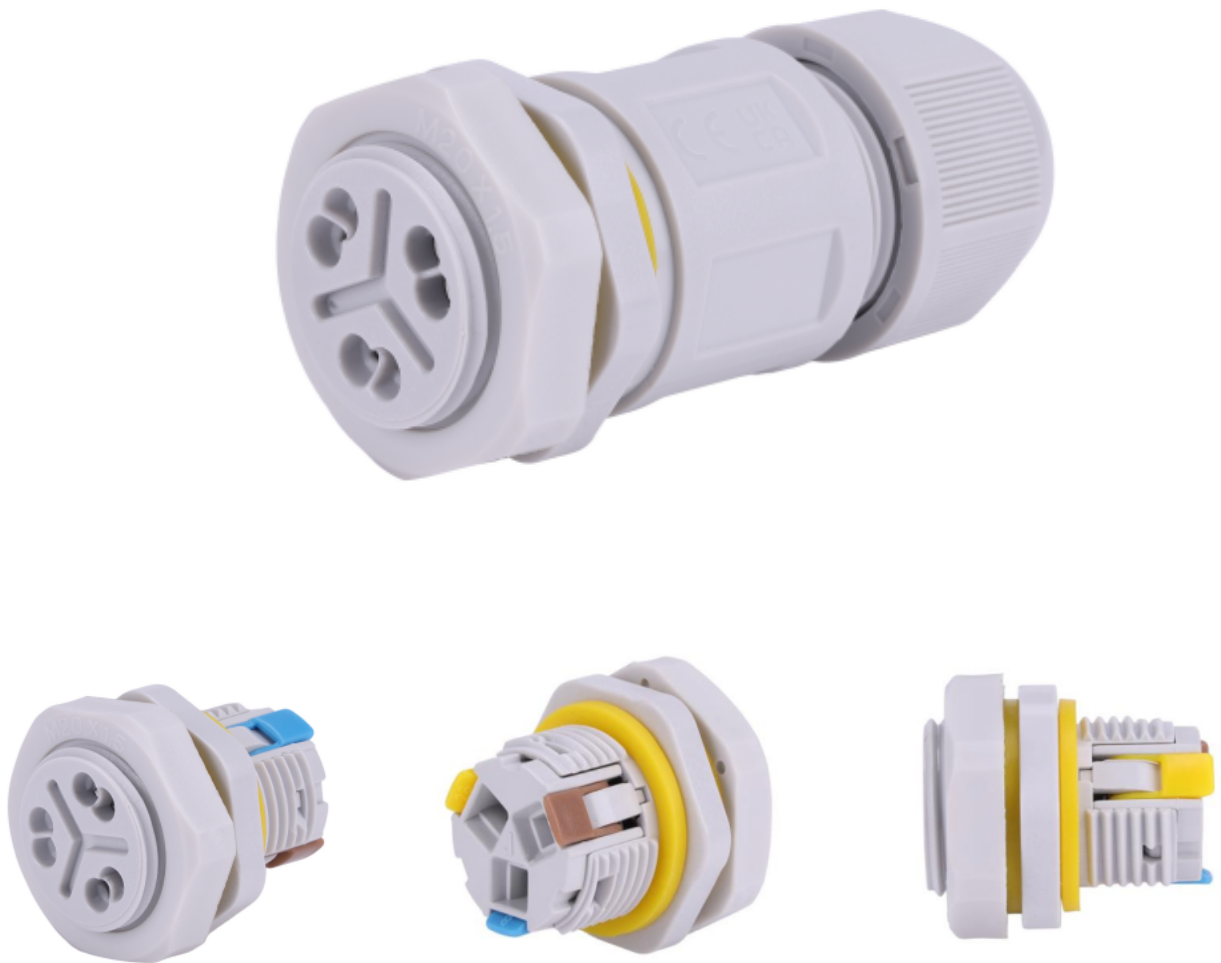




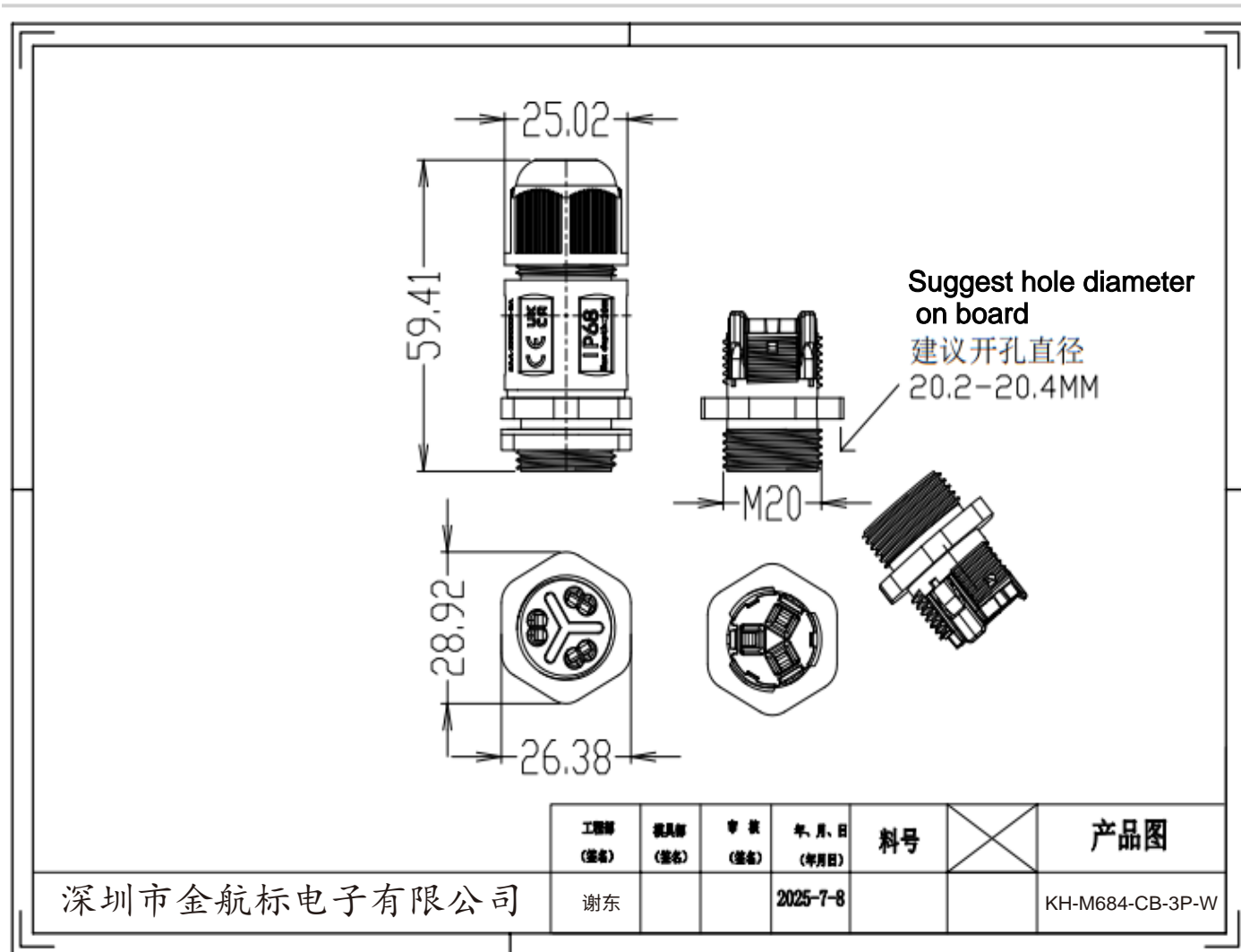
IP68 快速防水接线器/Quick waterproof connector

**KH-M684-CB-3P-W 线对板/Cable to board**



## 产品参数/Technical data

型号 Model	KH-M684-CB-3P-W 线对板/Cable to board	
材料 Material	防火阻燃 Fire and flame retardant UL94V-2	
额定输出 Rated output	IEC/NSW:24A 450VAC    ETL:10A 300VAC	
防护等级 IP code	IP68	
接线内芯 Terminal	3P	
工作温度 Working	T105	
接线范围 Rated connecting capacity	欧规 European:0.5 ~ 2.5mm <sup>2</sup> 澳规 Australia:0.5 ~ 2.5mm <sup>2</sup> 美规 American: SJOW 14-18AWG	
密封胶塞/seal plug		
胶塞孔径/plug aperture	8mm	12mm
适用线径/Available cable diameter (橡胶圆线/Round rubber cable)	1*M20(4-8mm)	1*M20(7-12mm)
防水测试 Testing	20M 150hours	
参考剥线长度 Refer to stripping length	10mm ( 0.5~1.0mm <sup>2</sup> ) rigid 15mm ( 1.5~2.5mm <sup>2</sup> ) rigid	
产品尺寸 Product Size(参考实际尺寸图)	29*60mm (Refer to actual drawing)	
认证 Certification	ENEC,CE,UKCA,ETL,NSW,CB,ROHS	
产品应用/Application	水底/Underwater(淡水 fresh water) 地理/Underground	



参考剥线长度  
Refer to stripping length

