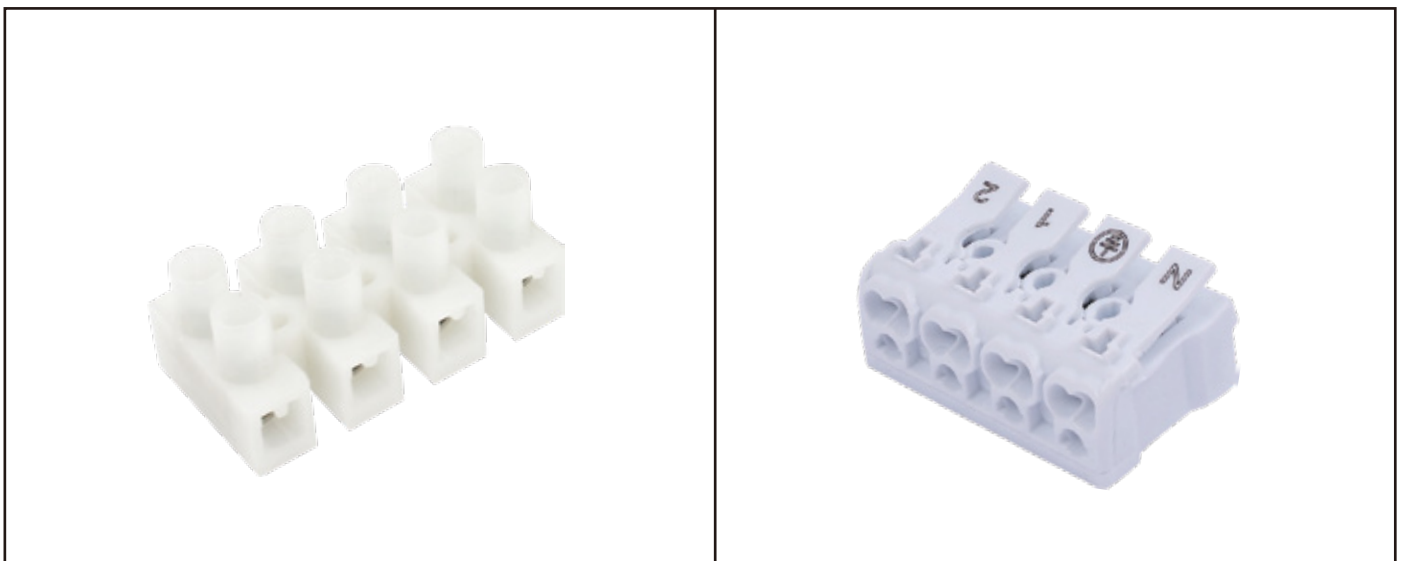


IP68 防水接线盒/ waterproof junction box



**KH-M686-A(1-3P)**



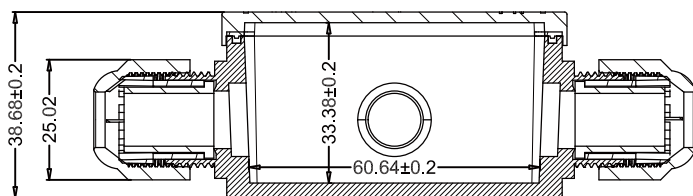
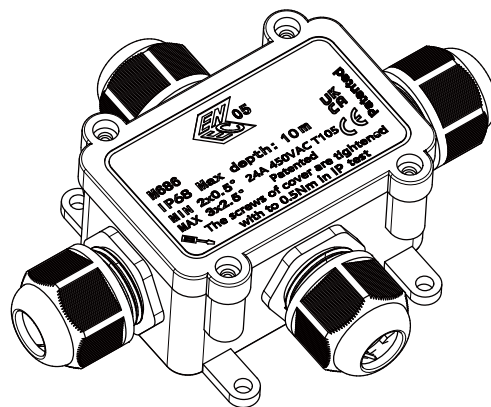
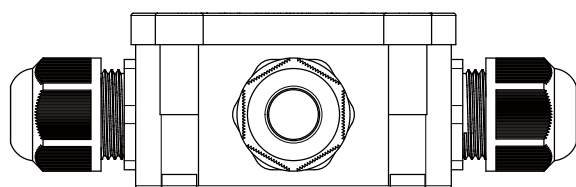
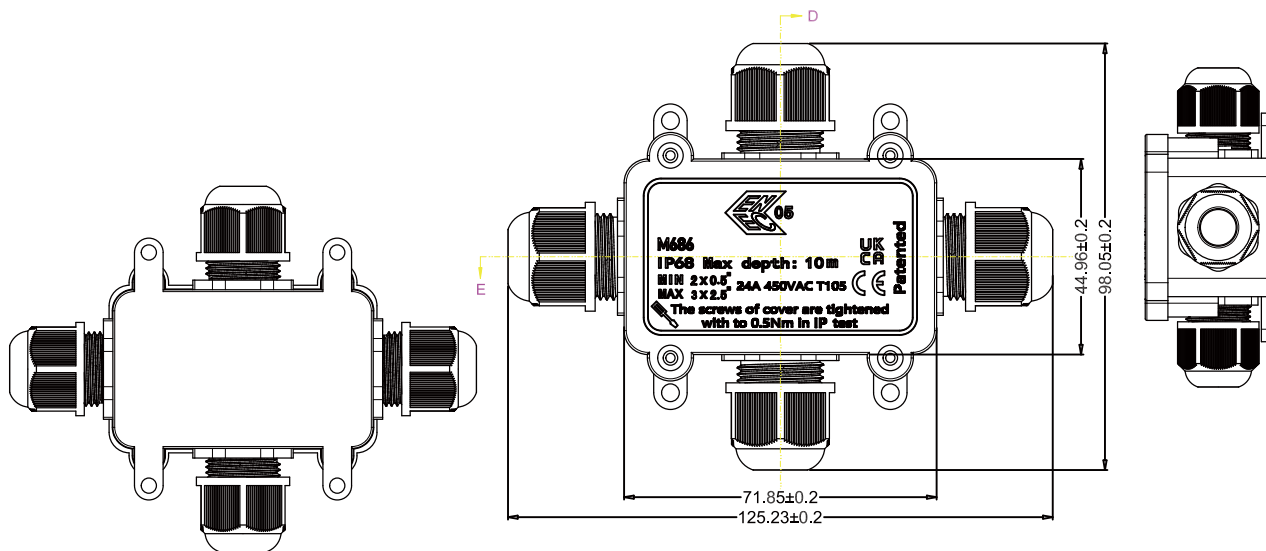
可选择端子/Optional Terminal



## 产品参数/Technical data

型号 Model	KH-M686-A(1-3P)	
材料 Material	UL94V-2 Fire and flame retardant	
额定输出 Rated power	IEC/NSW:24A 450VAC    ETL:10-15A 300VAC	
防护等级 IP code	IP68	
接线端子 Terminal	PA10 terminal or other terminals available	
工作温度 Working	T105	
接线范围 Rated connecting capacity	欧规 European:0.5 ~ 2.5mm <sup>2</sup> 澳规 Australia:0.5 ~ 2.5mm <sup>2</sup> 美规 American: SJOW 14-18AWG	
密封胶塞/seal plug		
胶塞孔径/plug aperturer	8mm	11mm
适用线径/Available cable diameter (橡胶圆线/Round rubber cable)	4*M20(4-8mm)	4*M20(6-11mm)
防水测试 Testing	10M 150hours	
产品尺寸 Product Size(参考实际尺寸图)	外尺寸/External dimensions: 125.23*98.05*38.68mm 内尺寸/Internal dimensions: 62*34*30mm (Refer to actual drawing)	
认证 Certification	ENEC,CE,UKCA,ETL,NSW,CB,ROHS	
产品质保/Quality Assurance	1 年/ one year	
产品应用/Application	水底/Underwater(淡水 fresh water) 地埋/Underground	
注/Mark:	<p>1.不能使用在盐碱土壤/Do not use in saline soil</p> <p>2.不能长期接触油性物质或浸泡在油污中/Do not contact oily substances or soak in oil for a long time</p> <p>3.不建议长期在日照暴晒下使用/Long time exposed under sunshine is not recommended</p>	

## 产品图纸/Product drawings



SECTION E-E

工程部 (签名)	模具部 (签名)	审核 (签名)	年、月、日 (年月日)	料号		产品图
谢东						KH-M686-A(1-3P)

深圳市金航标电子有限公司

产品分解/Product breakdown

