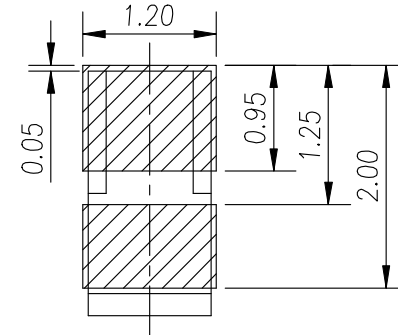
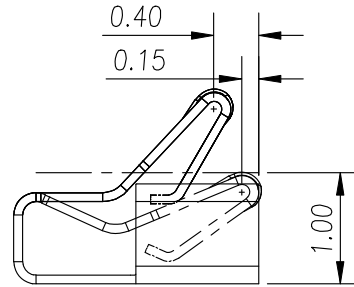
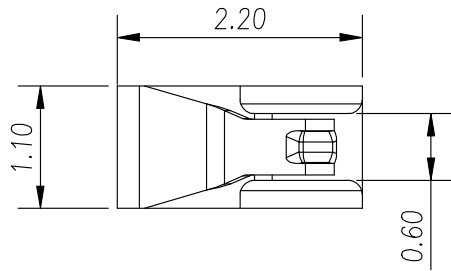


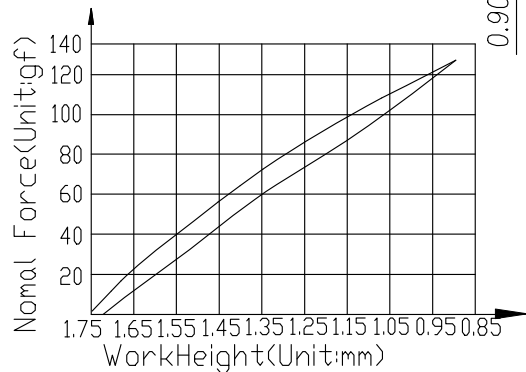
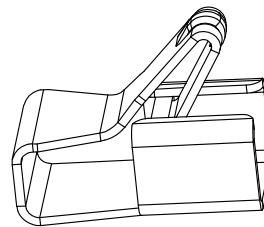
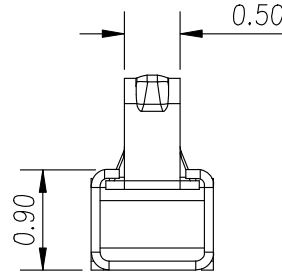
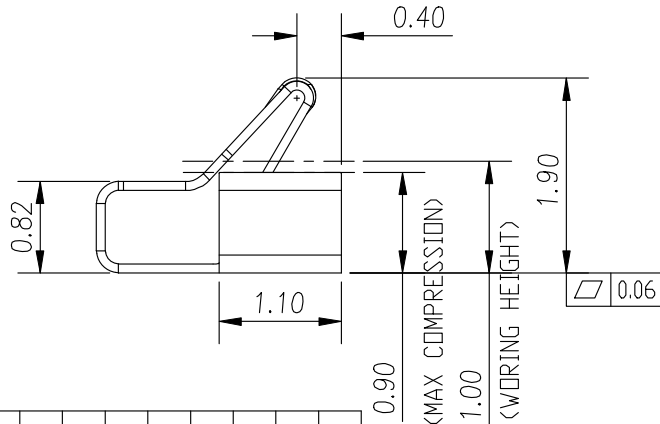
Kinghelm®

Rev.	ECN Number	Description	Date	Drawn	Checkd	Approved
A	ECN162264					



RECOMMENDED PCB LAYOUT
TOLERANCE ±0.05MM
(FOR REFERENCE ONLY)

State at
working height 1.00mm



NOTES:

1:MATERIAL:

1-1: STAINLESS STEEL, T=0.08mm.

2:FINISH:

2-1: 3u" MIN. Au PLATING ON CONTACT AREA,
1u" MIN PLATING ON SOLDER AREA,
50~150u" NICKEL UNDERPLATING OVER ALL.

2-2: NOT WITH TOLERANCE WITH REFERENCE TO THE TOLERANCE TABLE,
NOT A STANDARD SIZE REFERENCE 3D.

2-3: METAL MASK AND PCB LAYOUT DESIGN SIZE, FOR REFERENCE ONLY,
ON THE BASIS OF CUSTOMER ACTUAL DESIGN.

3:SPECIFICATIONS:

3-1. RATING CURRENT: 2A.

3-2. RATING VOLTAGE: 10V

3-3. CONTACT RESISTANCE: 50mΩ MAX.

3-4. OPERATING TEMPERATURE: -40°C~+85°C.

3-5. FORCE MAX. DEFLECTION: 0.70N ON CONTACT POINT.

3-6. MAX. BEAM DEFLECTION: 1.00mm. ON CONTACT POINT.

4:RF PERFORMANCE:

4-1. IMPEDANCE: 50Ω.

4-2. VSWR: 1.5 MAX. (DC~3GHz)

4-3. INSERTION LOSS: 0.6dB MAX. (DC~3GHz)

5:DURABILITY: 1000 CYCLES.

6.PACKING SPECIFICATION: REEL&TAPE

深圳市金航标电子有限公司 www.kinghelm.com.cn 型号: KH-221119-TP 0755-28190160	GENERAL TOLERANCE		SCALE: 1:1	DRAWN YUAN	DATE	DWG. NO.	TITLE (CUSTOMER DRAWING) Antenna RF Spring, SMT, Au Plating, L2.2*W1.1*H1.90 mm	REV. A
	XX. ±0.50		UNIT: mm	CHECK	DATE	PARTS NO. (INTENDED USE)		SHEET 1/1
	X. ±0.35	X.° ±2.0°		APPROVE	DATE			
	.X ±0.25	.X° ±1.0°	SIZE: A4					
	.XX ±0.15	.XX° ±0.5°						